

HAUS B2

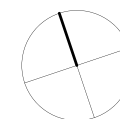
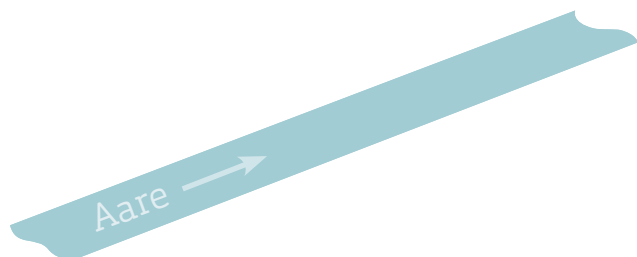
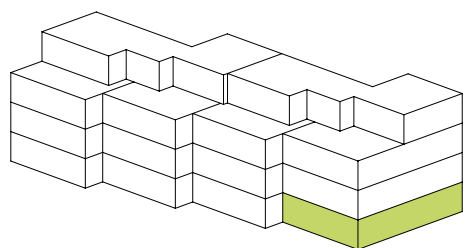
EG WOHNUNG B2.02

| | |
|--------------------|----------------------|
| Wohnungs-Nummer: | B2.02 |
| Etage: | EG |
| Anzahl Zimmer: | 4 1/2 |
| Nettowohnfläche: | 107.8 m ² |
| Sitzplatz gedeckt: | 20.0 m ² |
| Keller: | 8.5 m ² |
| Nettomiete: | CHF 1'700 |
| Nebenkosten: | CHF 220 |

OPTIONAL

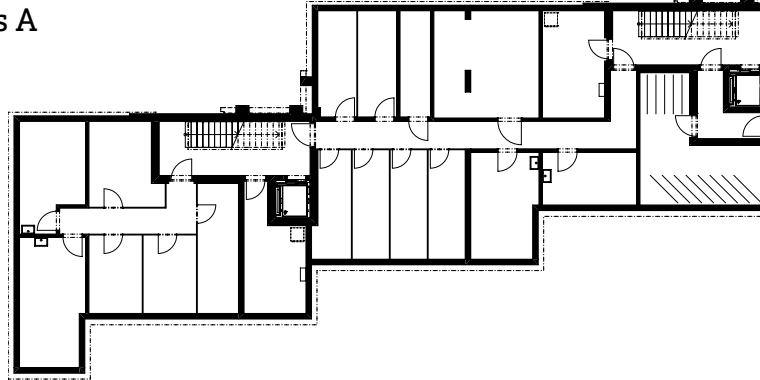
Bastelraum

| | | |
|---------------------|---------------------|---------|
| B2-BR1: | 14.9 m ² | CHF 100 |
| B2-BR2: | 14.5 m ² | CHF 100 |
| Einstellhallenplatz | | CHF 130 |

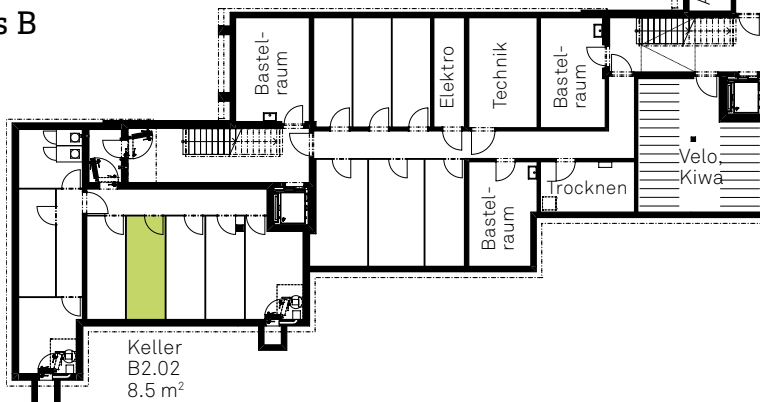


EINSTELLHALLE

Haus A



Haus B



Haus C

Haus D

