

# HAUS B1

## 1.OG WOHNUNG B1.12

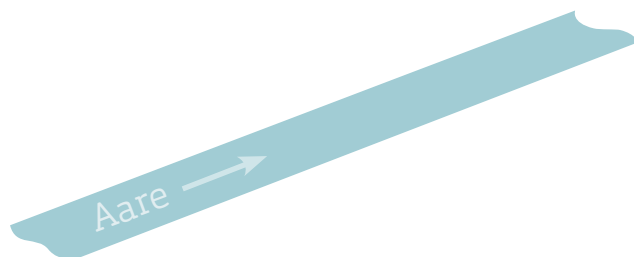
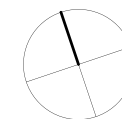
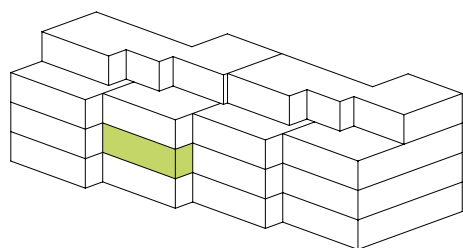
Wohnungs-Nummer	B1.12
Etage:	1. OG
Anzahl Zimmer:	4 1/2
Nettowohnfläche:	106.6 m <sup>2</sup>
Balkon gedeckt:	17.4 m <sup>2</sup>
Keller:	8.4 m <sup>2</sup>
Nettomiete:	CHF 1'720
Nebenkosten:	CHF 220

### OPTIONAL

#### Bastelraum

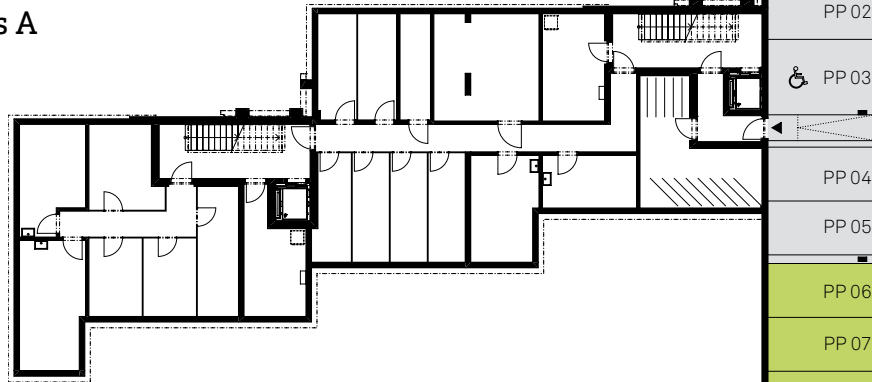
B1-BR1:	16.3 m <sup>2</sup>	CHF 110
---------	---------------------	---------

Einstellhallenplatz	CHF 130
---------------------	---------

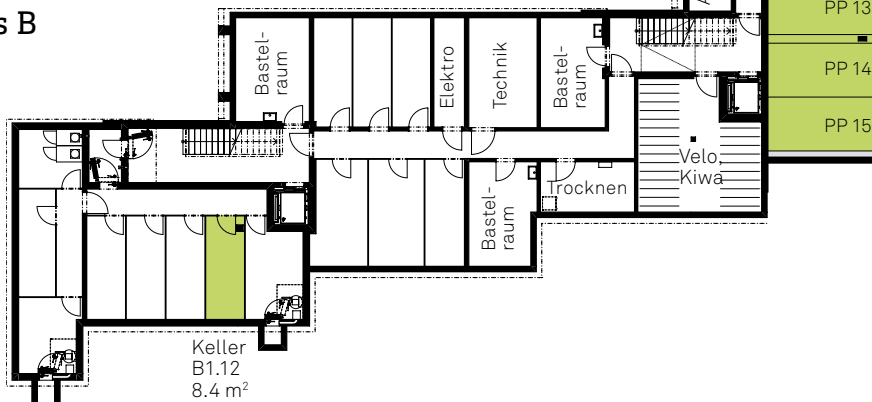


# EINSTELLHALLE

Haus A



Haus B



Haus C

Haus D

